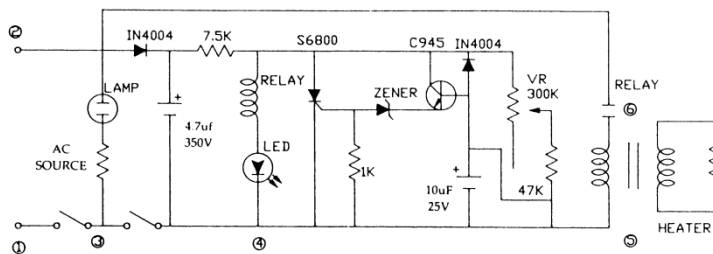


## SPECIFICATIONS

MODEL NO.	KF-300F	KF-400F	KF-600F
Power	400W	600W	800W
Max. Seal Length	12"	18"	24"
Seal Width	2.5mm	2.5mm	2.5mm
Max. Seal Thickness	16mil	16mil	16mil
Heat Time (sec)	0.2-1.8	0.2-1.8	0.2-1.8
Weight	42lbs	47lbs	51lbs
Dimensions	17" x 17" x 29.5"	17" x 17" x 29.5"	17" x 17" x 29.5"

## CONNECTION DIAGRAM

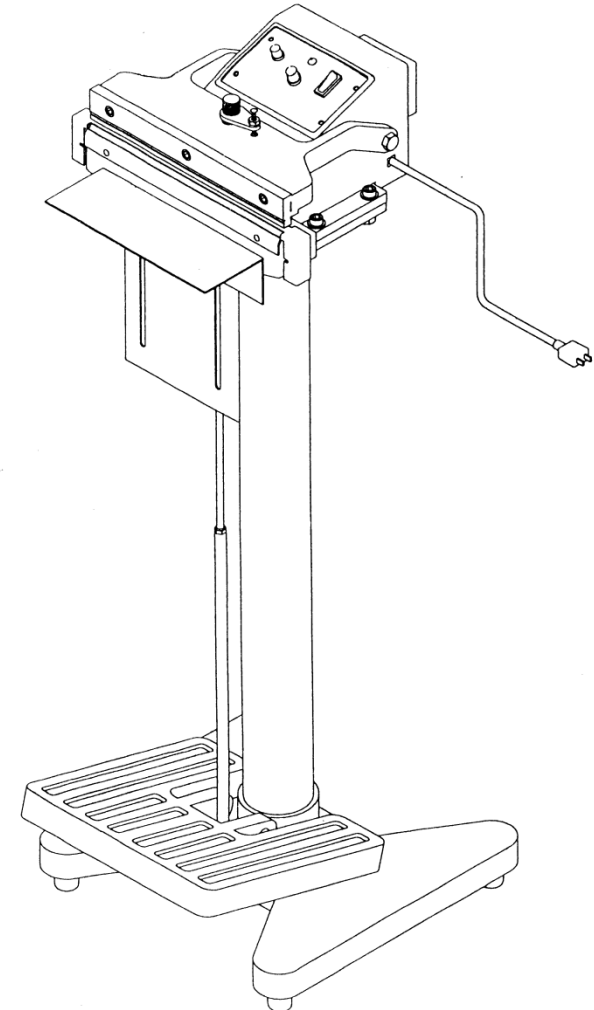


# FOOT SEALER

## OPERATING INSTRUCTIONS

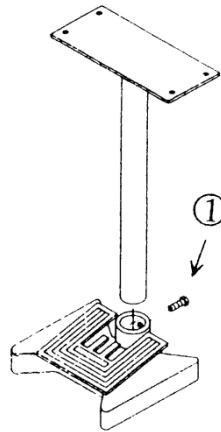
### MODELS

### KF-300F, KF-450F, KF-600F

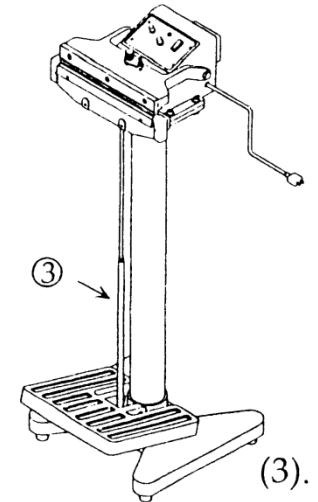


# ASSEMBLY INSTRUCTIONS

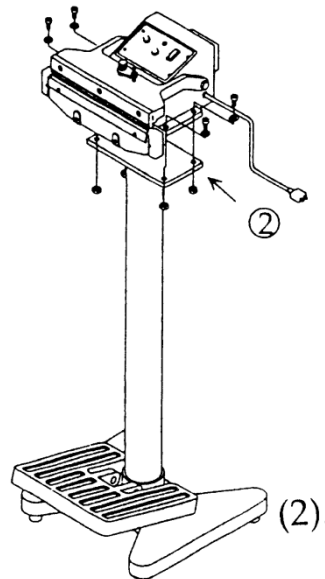
**Step 1.** Insert standing tube into pedal base and connect with short screw.



**Step 3.** Attach tension rod to puller (located under the base) and then attach foot pedal.

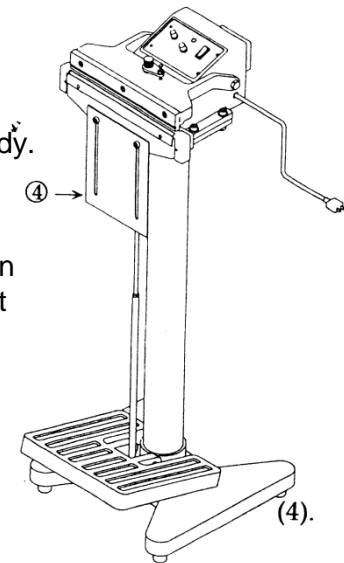


**Step 2.** With four long screws, connect body to stand.



**Step 4.** Connect working plate to body. Fit working plate over bracket.

Note: When attaching working plate bracket, leave enough space between sealer body and top of screws so that the working plate can be attached easily.



## OPERATING INSTRUCTIONS

1. Plug in unit.
2. Set power switch to "ON".
3. Adjust the timer to the minimum setting necessary to seal your poly bag.
4. Insert bag between the jaws of the sealer. Press down on foot pedal. When the light turns off, sealing is completed. Wait one to two seconds to allow the seal to cool, then release the foot pedal.

## TIPS FOR SUCCESSFUL SEALING

- Always keep the sealing platform clean. Particular care should be taken to remove any residue from the teflon tape
- Clean the sealing platform with a dry cloth. Do not use water or solvents.
- Make sure to change the upper teflon tape (above the element wire) when they become worn. If this is not done, the element wire may short out and become damaged.
- When replacing the heating element, always check the condition of the bottom teflon tape. We recommend changing the teflon tape EVERY TIME the element is changed. If the teflon tape is not changed, you risk the possibility of short circuit.
- Occasionally check the condition of the top pressure pad (silicone rubber) for wear and/or burn. A poor rubber pad will affect the quality of the seal.

## REPLACEMENT KIT INSTRUCTIONS

**Be sure to unplug the power cord before replacing any parts.**

To replace Teflon roll

1. Remove pressing plate and loosen the teflon clips.
2. Pull out the new section of teflon tape and cut off used portion. Reattach pressing plate.
3. Adjust teflon screw to tighten teflon roll. Tighten teflon clips.

To replace heating element wire

1. Loosen teflon clips. Remove teflon front pres bar. Lift up teflon.
2. Loosen side cover fixed screw and element fixed screw. Remove broken element wire.
3. Put new element wire and tighten element fixed screw. Also retighten side cover fixed screw. Do not bend or crimp the wire.
4. Replace the teflon and teflon front press bar. Tighten teflon with teflon screw. Tighten teflon clips.

